



Government of India
Ministry of Earth Sciences
India Meteorological Department



Press Release

Date: 04th December, 2025

Time of Issue: 1400 hours IST

Subject: (i) Isolated heavy rainfall likely over Tamil Nadu on 04th & 05th December and over Kerala & Mahe, Lakshadweep and Rayalaseema on 04th December.

(ii) Cold wave conditions very likely to prevail in isolated pockets over Punjab, Haryana and East Rajasthan on 05th; over Jharkhand during 6th-7th December.

Realised weather during past 24 hours ending at 0830 hours IST of today, the 04th December, 2025:

- ❖ **Heavy to very heavy rainfall at some places with isolated extremely heavy rainfall** over Rayalaseema. **Very Heavy rainfall** at isolated places over Tamil Nadu and Coastal Andhra Pradesh. **Heavy rainfall** at isolated places over Coastal Karnataka.
- ❖ **Dense fog (visibility 50-199 m):** reported in isolated pockets of Himachal Pradesh, Odisha, Assam & Meghalaya, Manipur and Tripura.
- ❖ **Cold wave conditions** at isolated places over Punjab, Haryana, Chandigarh, Delhi.
- ❖ **Ground frost** reported at isolated places over Uttarakhand.

Weather Systems, Forecast and Warnings (refer to ANNEXURE I & II):

- ❖ An **upper air cyclonic circulation** lies over east Bangladesh adjoining Assam & Meghalaya in lower tropospheric level.
- ❖ An **upper air cyclonic circulation** lay over Southeast Arabian Sea and adjoining Lakshadweep persists in the lower tropospheric level.
- ❖ The **Western disturbance** as an upper air cyclonic circulation persists over north Punjab & neighbourhood in lower tropospheric level.
- ❖ The **induced cyclonic circulation** lay over northwest Uttar Pradesh & neighbourhood in lower tropospheric level.
- ❖ Another **Western Disturbance** is seen as a trough in middle tropospheric westerlies with its axis in middle tropospheric level runs roughly along Long. 54°E to the north of Lat. 32°N.

Under the influence of these systems, the following weather is likely:

- ❖ Light to moderate rainfall accompanied with thunderstorm, lightning very likely at isolated places with **heavy rainfall** at isolated places over Tamil Nadu, Puducherry & Karaikal on 04th & 05th and over Kerala & Mahe, Lakshadweep and Rayalaseema on 04th December.
- ❖ Light to moderate rainfall at a few places **accompanied with thunderstorm, lightning** over Coastal Andhra Pradesh & Yanam on 04th December.

Temperature Conditions during past 24 hours till 0830 hours IST of today:

- ❖ **Minimum temperatures** are in the range of **less than 5°C** at most places over Jammu-Kashmir-Ladakh-Gilgit-Baltistan-Muzaffarabad; at many places over Himachal Pradesh; at isolated places over Uttarakhand, West Rajasthan; in the **range of 5°-10°C** at many places over Uttar Pradesh, Haryana Chandigarh & Delhi and Punjab;

at isolated parts of Madhya Pradesh, Chhattisgarh and Jharkhand. **The lowest minimum temperature of 3.0 °C is reported at Adampur (Punjab) over the plains of India.**

- ❖ **Minimum Temperature departures** were markedly below normal (-5.1°C or smaller) at isolated places over Delhi, Haryana; at appreciably below normal (-3.1°C to -5.0°C) at isolated places over Vidarbha and Bihar; below normal (-1.6°C to -3.0°C) at a few places over Jammu & Kashmir, Himachal Pradesh, Punjab and Andaman & Nicobar Islands; at isolated places over East Rajasthan, Uttar Pradesh, Gangetic West Bengal, Jharkhand and Chhattisgarh (**refer to ANNEXURE IV**)

Forecast of minimum temperatures:

- ❖ No significant change in minimum temperature likely over many parts of Northwest India for next 24 hours, thereafter gradual rise in minimum temperature by 3-4 °C during subsequent 4 days.
- ❖ Gradual fall in minimum temperature likely by 2-3°C over Central, East & Northeast India during next 2 days and thereafter no significant change.
- ❖ No significant change in minimum temperature likely for next 5 days and fall by 2-3°C thereafter during subsequent 2 days in Maharashtra and no significant change in minimum temperature is likely over the Gujarat during next 7 days.

Dense Fog & Cold wave warning Warnings:

- ❖ **Cold wave conditions** very likely to prevail in isolated pockets over Punjab, Haryana and East Rajasthan on 05th, Jharkhand on 06th & 07th December.
- ❖ **Dense fog conditions** very likely to prevail during early morning hours in isolated pockets of Assam & Meghalaya, Nagaland, Manipur, Mizoram & Tripura during 05th-09th; Himachal Pradesh during 05th-07th and over Odisha on 05th & 06th December.

Fisherman Warning:

Fishermen are advised not to venture into the following areas on 04th December:

- ❖ **Arabian Sea:**

Over Lakshadweep and adjoining areas of southeast Arabian sea & off Kerala coast on 04th December.

- ❖ **Bay of Bengal: Nil**

ii) Weather conditions and forecast over Delhi/NCR during 04th December-07th December, 2025 (ANNEXURE III)

For more details, kindly refer National Weather Bulletin:

https://mausam.imd.gov.in/responsive/all_india_forecast_bulletin.php

For District wise warnings refer: <https://mausam.imd.gov.in/responsive/districtWiseWarningGIS.php>

For Fishermen warning refer <https://rsmcnewdelhi.imd.gov.in/fishermen-warning.php>

Significant rainfall recorded (in cm) (from 0830 hours IST of yesterday to 0830 hours IST of today):

- ❖ **Coastal A.P. & Yanam:** Atmakur (dist Spsr Nellore) 11, Rapur (dist Spsr Nellore) 9;
- ❖ **Rayalaseema:** Gudur (dist Tirupati) 21, Thottambedu (dist Tirupati) 11, Venkatagiri (dist Tirupati) 9, Srikalahasti (dist Tirupati) 9, Sullurpeta (dist Tirupati) 8, Satyavedu (dist Tirupati) 8, Pullampeta (dist Annamayya District) 7, Penagaluru (dist Annamayya District) 7;
- ❖ **Coastal Karnataka:** Dakshina_Kannada_Bantwal_Kadeshwalya 9, Dakshina Kannada_Belthangadi_Madanthiyaru 8
- ❖ **Tamil Nadu:** Ennore AWS 17; Gummidipondi 15; Uthukottai 11; Tindivanam 11; Ponneri 10; Cholavaram 9; Avadi 7; Red Hill 7; Thamarapaikkam 7

Visibility reported (≤200 m) (in meter):

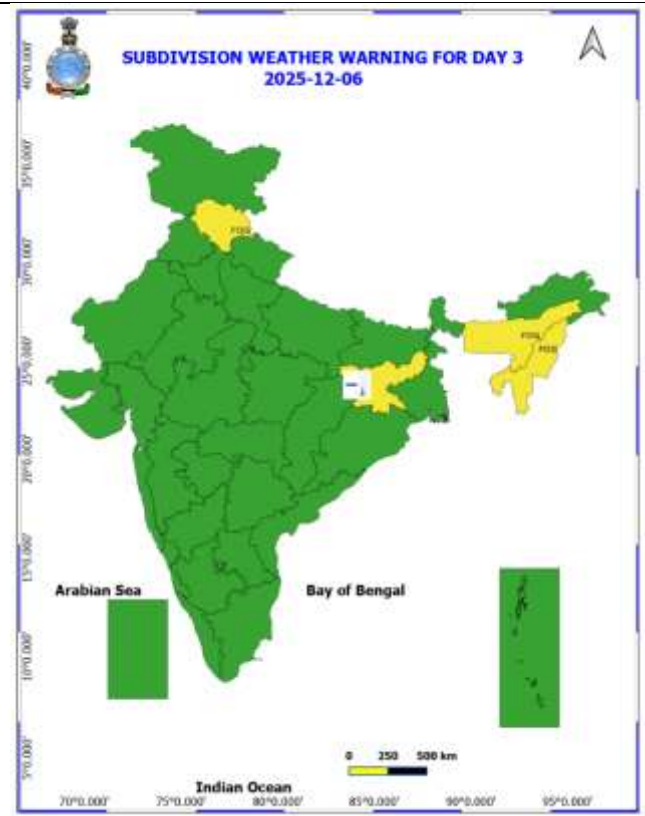
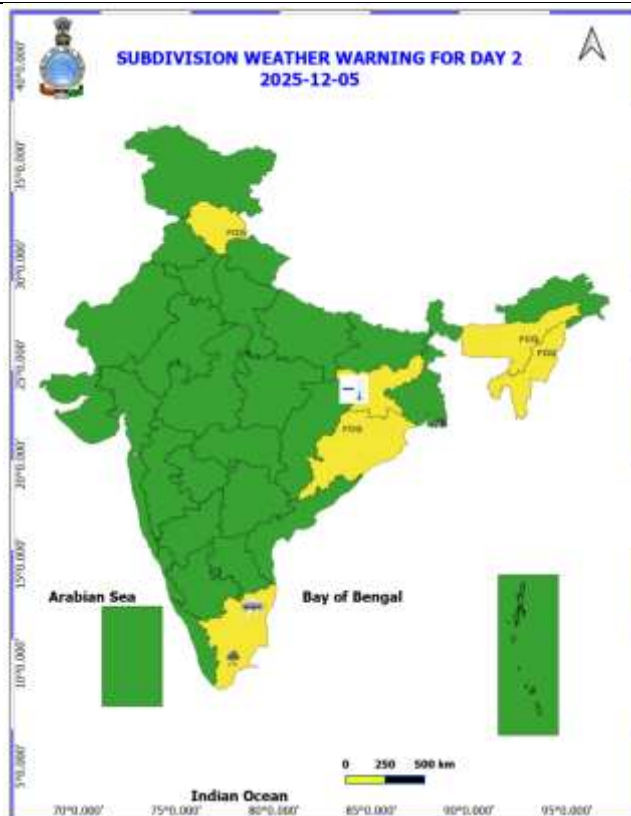
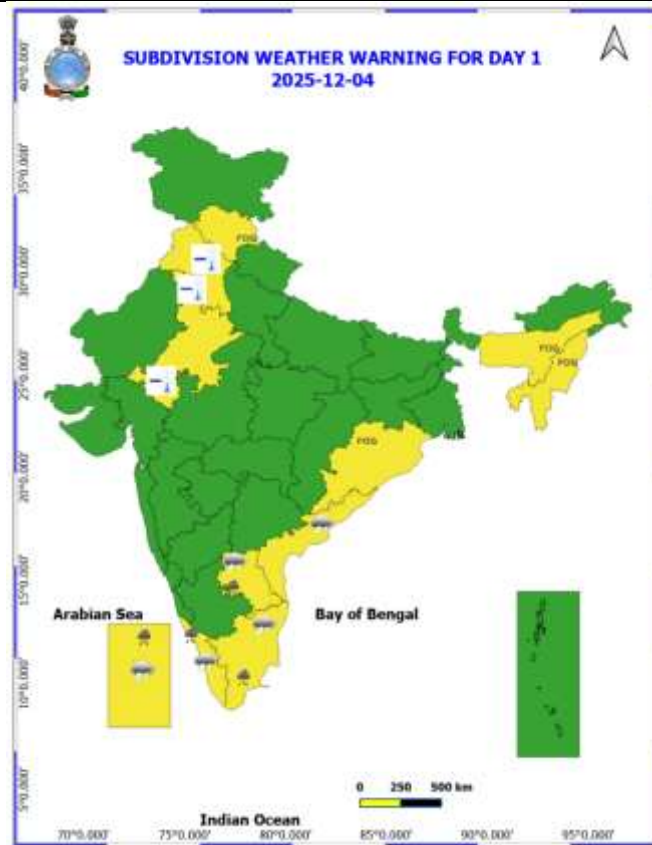
Odisha: Rourkela-100m;

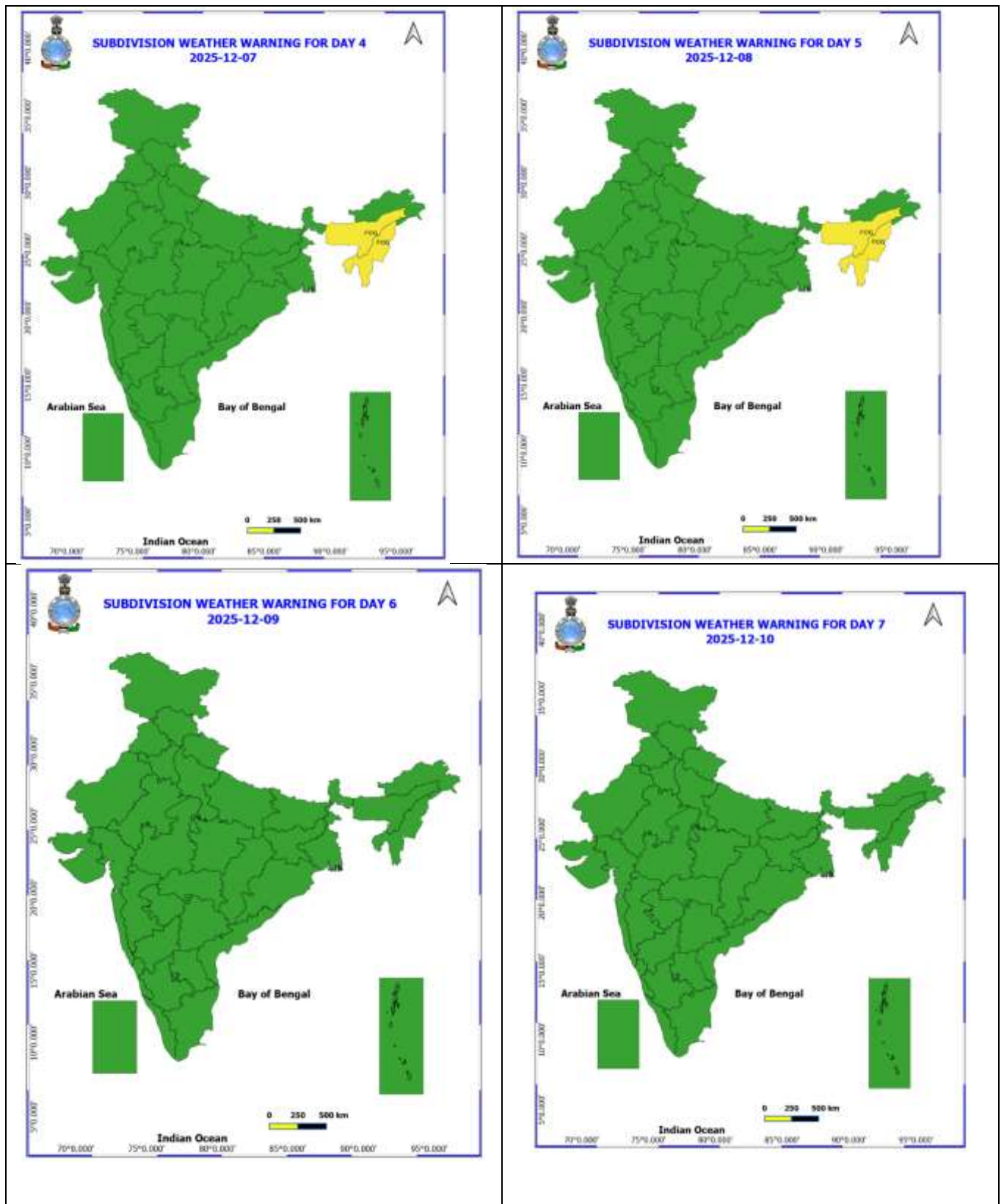
Himachal Pradesh: Bilaspur-50m, Mandi-150m

ANNEXURE I

Table-1								
7 Days Rainfall Forecast								
S.No.	Subdivision	4- Dec	5- Dec	6- Dec	7- Dec	8- Dec	9- Dec	10- Dec
		Day 1	Day 2	Day 3	Day 4	Day 5	Day 6	Day 7
1	ANDAMAN & NICOBAR ISLANDS	DRY	SCT	FWS	FWS	FWS	ISOL	ISOL
2	ARUNACHAL PRADESH	DRY	DRY	DRY	DRY	DRY	DRY	DRY
3	ASSAM & MEHGHALAYA	DRY	DRY	DRY	DRY	DRY	DRY	DRY
4	NAGALAND, MANIPUR, MIZORAM AND TRIPURA	DRY	DRY	DRY	DRY	DRY	DRY	DRY
5	SUB HIMALAYAN WEST BENGAL & SIKKIM	DRY	DRY	DRY	DRY	DRY	DRY	DRY
6	GANGETIC WEST BENGAL	DRY	DRY	DRY	DRY	DRY	DRY	DRY
7	ODISHA	DRY	DRY	DRY	DRY	DRY	DRY	DRY
8	JHARKHAND	DRY	DRY	DRY	DRY	DRY	DRY	DRY
9	BIHAR	DRY	DRY	DRY	DRY	DRY	DRY	DRY
10	EAST UTTAR PRADESH	DRY	DRY	DRY	DRY	DRY	DRY	DRY
11	WEST UTTAR PRADESH	DRY	DRY	DRY	DRY	DRY	DRY	DRY
12	UTTARAKHAND	DRY	ISOL	DRY	ISOL	ISOL	DRY	DRY
13	HARYANA, CHANDIGARH & DELHI	DRY	DRY	DRY	DRY	DRY	DRY	DRY
14	PUNJAB	DRY	DRY	DRY	DRY	DRY	DRY	DRY
15	HIMACHAL PRADESH	DRY	ISOL	DRY	ISOL	DRY	DRY	DRY
16	JAMMU AND KASHMIR AND LADAKH	DRY	ISOL	DRY	DRY	ISOL	DRY	ISOL
17	WEST RAJASTHAN	DRY	DRY	DRY	DRY	DRY	DRY	DRY
18	EAST RAJASTHAN	DRY	DRY	DRY	DRY	DRY	DRY	DRY
19	WEST MADHYA PRADESH	DRY	DRY	DRY	DRY	DRY	DRY	DRY
20	EAST MADHYA PRADESH	DRY	DRY	DRY	DRY	DRY	DRY	DRY
21	GUJRAT REGION	DRY	DRY	DRY	DRY	DRY	DRY	DRY
22	SAURASHTRA & KUTCH	DRY	DRY	DRY	DRY	DRY	DRY	DRY
23	KONKAN & GOA	DRY	DRY	DRY	DRY	DRY	DRY	DRY
24	MADHYA MAHARASHTRA	DRY	DRY	DRY	DRY	DRY	DRY	DRY
25	MARATHWADA	DRY	DRY	DRY	DRY	DRY	DRY	DRY
26	VIDARBHA	DRY	DRY	DRY	DRY	DRY	DRY	DRY
27	CHHATTISGARH	DRY	DRY	DRY	DRY	DRY	DRY	DRY
28	COASTAL ANDHRA PRADESH	ISOL	ISOL	ISOL	DRY	DRY	DRY	DRY
29	TELANGANA	DRY	DRY	DRY	DRY	DRY	DRY	DRY
30	RAYALASEEMA	SCT	ISOL	ISOL	DRY	DRY	DRY	DRY
31	TAMILNADU & PUDUCHERRY	SCT	SCT	ISOL	ISOL	ISOL	ISOL	ISOL
32	COSTAL KARNATAKA	SCT	ISOL	DRY	DRY	DRY	DRY	DRY
33	NORTH INTERIOR KARNATAKA	DRY	DRY	DRY	DRY	DRY	DRY	DRY
34	SOUTH INTERIOR KARNATAKA	SCT	ISOL	DRY	DRY	DRY	DRY	DRY
35	KERALA AND MAHE	FWS	SCT	ISOL	ISOL	ISOL	ISOL	ISOL
36	LAKSHADWEEP	DRY	SCT	SCT	DRY	DRY	DRY	DRY

- As the lead period increases forecast accuracy decrease.





- Action may be taken based on ORANGE AND REDCOLOUR warnings.
- Vulnerable regions likely urban and hilly areas action may be initiated for heavy rainfall warning.
- As the lead period increases forecast accuracy decreases.

Detailed districtwise MultiHazard weather warning for next five days available at
<https://mausam.imd.gov.in/responsive/districtWiseWarningGIS.php>

Weather forecast over Delhi/NCR during 04th December to 07th December 2025**Past Weather:**

There has been an appreciable fall in maximum temperatures upto 2°C and a fall in minimum temperatures upto 1°C during the past 24 hours over Delhi. The maximum and minimum temperatures over Delhi were around 21 to 24 °C and 05 to 08°C, respectively. The minimum temperatures are appreciably below normal (-3.1 to -5.0 °C) at many places and markedly below normal (-5.1 or less) at isolated places over Delhi. The maximum temperatures were below normal (-1.6 to -3.0 °C) at many places and appreciably below normal (-3.1 to -5.0 °C) at isolated places and normal (-1.5 to 1.5°C) at a few places over Delhi. Mainly clear sky conditions with predominant surface wind from the northwest direction, with a wind speed up to 18 kmph, prevailed during the past 24 hours. Mainly clear sky conditions with wind from the west direction with a wind speed up to 10 kmph prevailed over the region in the forenoon today.

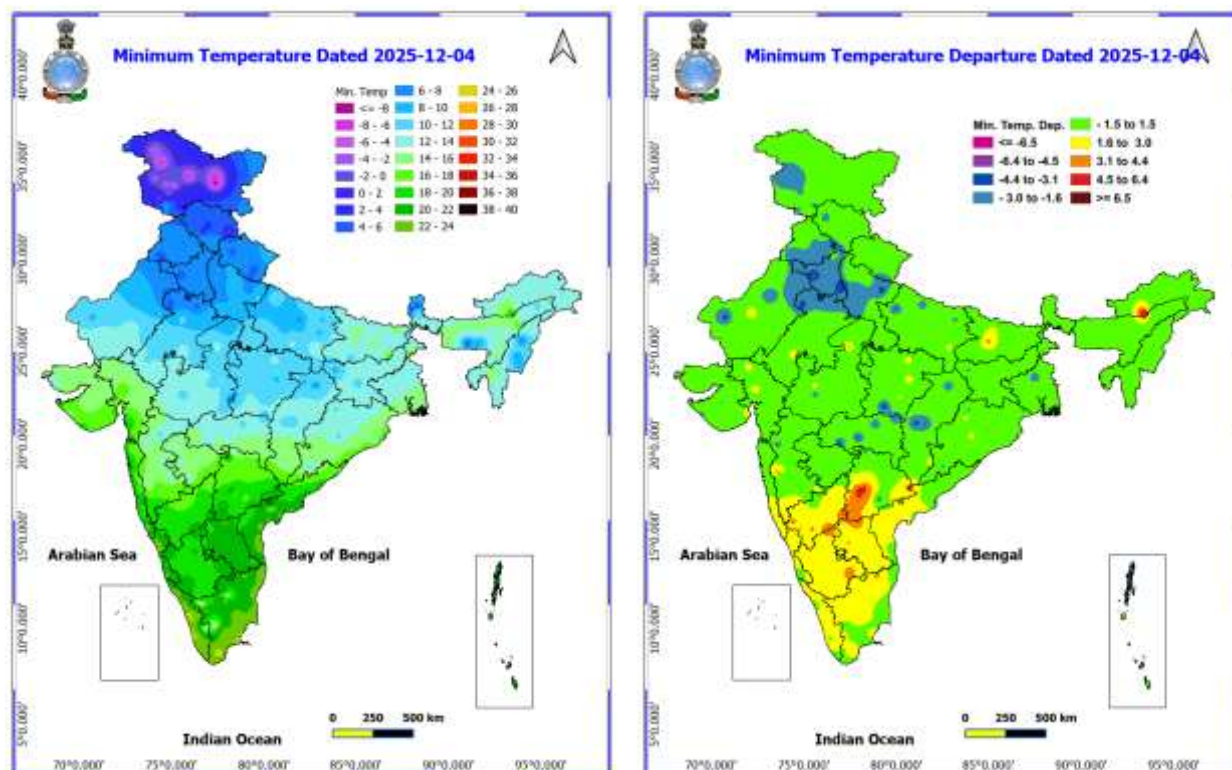
Weather Forecast:

04.12.2025: Mainly clear sky. Mist/Haze during the night. The maximum temperatures are likely to be in the range of 22 to 24°C. The maximum temperatures will be below normal (-1.3 to -3.3 °C) over Delhi. The predominant surface wind is likely to be from the northwest direction, with wind speeds up to 15 kmph during the afternoon hours. The wind speed will decrease up to 10 kmph from the northwest direction during the evening and night.

05.12.2025: Mainly clear sky. Shallow fog during morning hours. Cold wave conditions at isolated places. The maximum and minimum temperatures over Delhi are likely to be in the range of 22 to 24°C and 04 to 06°C respectively. The minimum temperatures will be below normal (-3.5 to -5.5 °C), and the maximum temperatures will be below normal (-1.3 to -3.3 °C) over Delhi. The predominant surface wind is likely to be from the northwest direction with wind speeds up to 10 kmph during morning hours. The wind speed will increase, becoming less than 12 kmph from the northwest direction in the afternoon. The wind speed will decrease, becoming less than 10 kmph from the northwest direction during the evening and night.

06.12.2025: Partly cloudy sky. Shallow fog during morning hours. The maximum and minimum temperatures over Delhi are likely to be in the range of 23 to 25°C and 07 to 09°C respectively. The minimum temperatures will be below normal (-0.5 to -2.5 °C), and the maximum temperatures will be below normal (-0.3 to -2.3 °C) over Delhi. The predominant surface wind is likely to be from the northwest direction associated with wind speeds up to 15 kmph during morning hours. The wind speed will be up to 15 kmph from the northwest direction in the afternoon. The wind speed will be less than 15 kmph from the northwest direction during the evening and night.

07.12.2025: Partly cloudy sky. Shallow fog during morning hours. The maximum and minimum temperatures over Delhi are likely to be in the ranges of 24 °C to 26 °C and 8 °C to 10 °C, respectively. The minimum temperatures and the maximum temperatures will be near normal over Delhi. The predominant surface wind is likely to be from the northwest direction, with wind speeds of up to 15 kmph during the morning hours. The wind speed will decrease up to 10 kmph from the northwest direction in the afternoon. The predominant surface wind is likely to be from the northwest direction with wind speed up to 10 kmph during the evening and night.



❖ **Impact expected due to Cold Wave conditions over Punjab, Haryana and East Rajasthan on 05th, Jharkhand on 06th & 07th December.**

- ❖ An increased likelihood of various illnesses like flu, running/ stuffy nose or nosebleed, which usually set in or get aggravated due to prolonged exposure to cold.
- ❖ Do not ignore shivering. It is the first sign that the body is losing heat. Get Indoors.
- ❖ Frostbite can occur due to prolonged exposure to cold. The skin turns pale, hard and numb and eventually black blisters appear on exposed body parts such as fingers, toes, nose and or earlobes. Severe frostbite needs immediate medical attention and treatment.
- ❖ Impact on agriculture, crop, livestock, water supply, transport and power sector at some places.

Action suggested:

- ❖ Wear several layers of loose fitting, light weight; warm woollen clothing.
- ❖ Cover your head, neck, hands and toes adequately as majority of heat loss occurs through these body parts. Wear several layers of loose fitting, light weight; warm woollen clothing rather than one layer of heavy cloth.
- ❖ Eat vitamin-C rich fruits & vegetable and drink sufficient fluids preferably warm fluids to maintain adequate immunity.
- ❖ Avoid or limit outdoor activities.
- ❖ Keep dry, if wet, change cloths immediately to prevent loss of body heat. Wear insulated/waterproof shoes.
- ❖ Warm the affected area of the body slowly with lukewarm water; do not rub the skin vigorously.
- ❖ If the affected skin area turns black, immediately consult a doctor.
- ❖ Maintain ventilation while using Heaters to avoid inhaling toxic fumes.
- ❖ Take safety measures while using electrical and gas heating devices.
- ❖ Extreme care needed for vulnerable people.
- ❖ Seek medical attention as soon as possible for someone suffering from frostbite/ Hypothermia.
- ❖ Protect livestock from cold weather.

Agromet advisories for likely impact of Heavy Rainfall

- In **Tamil Nadu**, postpone sowing of groundnut. Drain out excess rain water from the fields of rice, groundnut, sugarcane, cotton, black gram, maize and vegetables and plantations of coconut, banana, arecanut, mango, rubber, cinnamon and black pepper. Strengthen irrigation channels and field bunds in rice to avoid crop lodging. Provide support to banana plants with wooden poles to prevent them from falling.
- In **Rayalaseema**, postpone sowing of maize, chickpea and black gram. Maintain optimum water level in already transplanted rice fields. Drain out excess water from rice nurseries, sugarcane, and already sown chickpea and black gram.

Livestock / Fishery

- Keep the animals inside the shed during heavy rainfall and provide them balanced feed.
- Store feed and fodder in a safe place to prevent spoilage.
- Construct an outlet with proper netting around the ponds to drain out excess water, thereby preventing fish from escaping in case of overflow.

Agromet advisories for likely impact of Thunderstorm / Gusty Winds

- Provide mechanical support to horticultural crops and staking or support to vegetables and young fruit plants / fruit-bearing plants to avoid lodging due to strong winds.

Agromet advisories for likely impact of Cold Waves / Low Temperatures

- In **Punjab, Haryana, Jharkhand** and **East Rajasthan**, apply light and frequent irrigation to the standing crops in the evening to protect the crops from low temperature stress. Use mulching and cover vegetable nurseries and young fruit plants with straw / polythene sheets to maintain optimum soil temperature.

Livestock / Poultry

- Keep cattle inside the sheds during night and provide dry bedding to protect them from cold.
- Keep the chicks warm by providing artificial light in the poultry sheds.

Legends & abbreviations:

- ❖ **Heavy Rain:** 64.5-115.5mm; **Very Heavy Rain:** 115.6-204.4mm; **Extremely Heavy Rain:** >204.4mm.
- ❖ **Obsy:** Observatory; **Automatic Weather Station;** **ARG:** Automatic Rain Gauge; **dist:** District; **NH:** National Highway; **KVK:** Krishi Vigyan Kendra; **DVC:** Damodar Valley Corporation; **PTO:** Part Time Office, **Aero:** Aerodrome, **IAF:** Indian Air Force.
- ❖ **Region wise classification of meteorological Sub-Divisions:**
 - **Northwest India:** Western Himalayan Region (Jammu-Kashmir-Ladakh-Gilgit-Baltistan-Muzaffarabad, Himachal Pradesh and Uttarakhand); Punjab, Haryana-Chandigarh-Delhi; West Uttar Pradesh, East Uttar Pradesh, West Rajasthan and East Rajasthan.
 - **Central India:** West Madhya Pradesh, East Madhya Pradesh, Vidarbha and Chhattisgarh.
 - **East India:** Bihar, Jharkhand, Sub-Himalayan West Bengal & Sikkim; Gangetic West Bengal, Odisha and Andaman & Nicobar Islands.

- **Northeast India:** Arunachal Pradesh, Assam & Meghalaya and Nagaland, Manipur, Mizoram & Tripura.
- **West India:** Gujarat Region, Saurashtra & Kutch, Konkan & Goa, Madhya Maharashtra and Marathawada.
- **South India:** Coastal Andhra Pradesh & Yanam, Telangana, Rayalaseema, Coastal Karnataka, North Interior Karnataka, South Interior Karnataka, Kerala & Mahe, Tamil Nadu, Puducherry & Karaikal and Lakshadweep.

LEGENDS

1. अंडमान और निकोबार द्वीपसमूह

2. अरुणाचल प्रदेश

3. असम और मेघालय

4. नागालैंड, मणिपुर, मिजोरम और त्रिपुरा

5. उप-हिमालयी पश्चिम बंगाल और सिक्किम

6. गंगीय पश्चिम बंगाल

7. ओडिशा

8. झारखंड

9. बिहार

10. पूर्वी उत्तर प्रदेश

11. पश्चिम उत्तर प्रदेश

12. उत्तराखंड

13. हरियाणा, चंडीगढ़ और दिल्ली

14. पंजाब

15. हिमाचल प्रदेश

16. जम्मू और कश्मीर और लद्दाख

17. पश्चिम राजस्थान

18. पूर्वी राजस्थान

19. पश्चिम मध्य प्रदेश

20. पूर्वी मध्य प्रदेश

21. गुजरात

22. सौराष्ट्र

23. कोंकण और गोवा

24. मध्य महाराष्ट्र

25. मराठवाड़ा

26. विदर्भ

27. छत्तीसगढ़

28. तटीय आंध्र प्रदेश और यनम

29. तेलंगाना

30. रायलसीमा

31. तमिलनाडु, पुडुचेरी और कराईकल

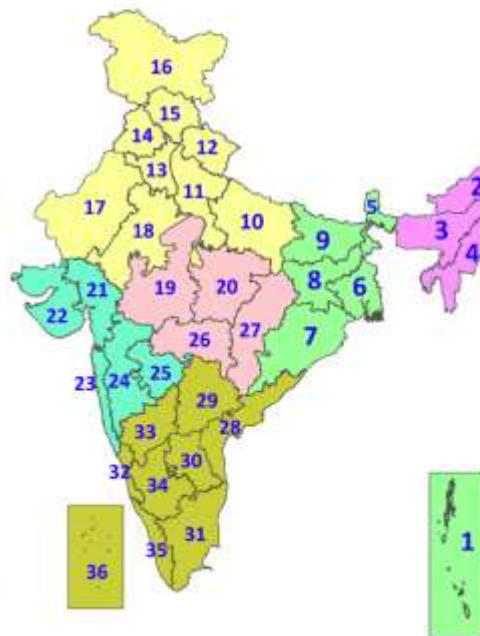
32. तटीय कर्नाटक

33. आंतरिक उत्तरी कर्नाटक

34. आंतरिक दक्षिणी कर्नाटक

35. केरल और माहे

36. लक्षद्वीप



1. Andaman & Nicobar Islands

2. Arunachal Pradesh

3. Assam & Meghalaya

4. Nagaland, Manipur, Mizoram & Tripura

5. Sub-Himalayan West Bengal & Sikkim

6. Gangetic West Bengal

7. Odisha

8. Jharkhand

9. Bihar

10. East Uttar Pradesh

11. West Uttar Pradesh

12. Uttarakhand

13. Haryana, Chandigarh & Delhi

14. Punjab

15. Himachal Pradesh

16. Jammu & Kashmir and Ladakh

17. West Rajasthan

18. East Rajasthan

19. West Madhya Pradesh

20. East Madhya Pradesh

21. Gujarat

22. Saurashtra

23. Konkan & Goa

24. Madhya Maharashtra

25. Marathwada

26. Vidarbha

27. Chhattisgarh

28. Coastal Andhra Pradesh & Yanam

29. Telangana

30. Rayalaseema

31. Tamilnadu, Puducherry & Karaikal

32. Coastal Karnataka

33. North Interior Karnataka

34. South Interior Karnataka

35. Kerala & Mahe

36. Lakshadweep

SPATIAL DISTRIBUTION (% of Stations reporting)

% Stations	Category	% Stations	Category
76-100	Widespread (WS/Most Places)	26-50	Scattered (SCT/A Few Places)
51-75	Fairly Widespread (FWS/Many Places)	1-25	Isolated (ISOL)



Fog



Heavy Snow



Cold Wave



Heavy Rain



Dust Storm



Cold Day



Very Heavy Rain



Heat Wave



Ground Frost



Extremely Heavy Rain



Warm Night



Thunder & Lightning



Hot Day



Hailstorm



Hot & Humid



Dust Raising Winds



Strong Surface Winds

COLOUR CODED WARNING

No Warning (No Action)

Watch (Be Aware)

Alert (Be Prepared To Take Action)

Warning (Take Action)

Probabilistic Forecast

Terms	Probability of Occurrence (%)
Unlikely	< 25
Likely	25 - 50
Very Likely	50 - 75
Most Likely	> 75

* Red colour warning does not mean "Red Alert", Red colour warning means "Take Action".

Forecast and Warning for any day is valid from 0830 hours IST of day till 0830 hours IST of next day.

For more details, kindly visit <https://mausam.imd.gov.in> or contact: 011-2434-4599

(Service to the Nation since 1875)

DEFINITION/CRITERIA

Rain/ Snow *

Heavy: 64.5 to 115.5 mm/cm *
Very Heavy: 115.6 to 204.4 mm/cm *
Extremely Heavy: > 204.4 mm/cm *

Heat Wave

When maximum temperature of a station reaches $\geq 40^{\circ}\text{C}$ for plains and $\geq 30^{\circ}\text{C}$ for hilly regions

(a) Based on Departure from normal

Heat Wave: Maximum Temperature Departure from normal 4.5°C to 6.4°C .

Severe Heat Wave: Maximum Temperature Departure from normal $\geq 6.5^{\circ}\text{C}$

(b). Based on Actual maximum temperature

Heat Wave: When actual maximum temperature $\geq 45^{\circ}\text{C}$.

Severe Heat Wave: When actual maximum temperature $\geq 47^{\circ}\text{C}$.

(c). Criteria for heat wave for coastal stations

When maximum temperature departure is $> 4.5^{\circ}\text{C}$ from normal. Heat Wave may be described provided maximum temperature $\geq 37^{\circ}\text{C}$.

Warm Night

When maximum temperature remains 40°C

Warm Night: When minimum temperature departure 4.5°C to 6.4°C .

Severe Warm Night: When minimum temperature departure $> 6.4^{\circ}\text{C}$.

Cold Wave

When minimum temperature of a station $\leq 10^{\circ}\text{C}$ for plains and $\leq 0^{\circ}\text{C}$ for hilly regions.

(a). Based on departure

Cold Wave: Minimum Temperature Departure from normal -4.5°C to -6.4°C .

Severe Cold Wave: Minimum Temperature Departure from normal $\leq -6.5^{\circ}\text{C}$

(b) Based on actual Minimum Temperature (for Plains only)

Cold Wave: When Minimum Temperature is $\leq 4.0^{\circ}\text{C}$

Severe Cold Wave: When Minimum Temperature is $\leq 2.0^{\circ}\text{C}$

(c) For Coastal Stations

When Minimum Temperature departure is $\leq -4.5^{\circ}\text{C}$ & actual Minimum Temperature is $\leq 15^{\circ}\text{C}$

Cold Day

When minimum temperature of a station $\leq 10^{\circ}\text{C}$ for plains and $\leq 0^{\circ}\text{C}$ for hilly regions

Based on departure

Cold Day: Maximum Temperature Departure from normal -4.5°C to -6.4°C .

Severe Cold Day: Maximum Temperature Departure from normal $\leq -6.5^{\circ}\text{C}$

Fog

Phenomenon of small droplets suspended in air and the horizontal visibility $< 1\text{km}$

Moderate Fog: When the visibility between 500-200 metres

Dense Fog: when the visibility between 50- 200 metres

Very Dense Fog: when the visibility < 50 metres

Thunderstorm

Sudden electrical discharges manifested by a flash of light (Lightning) and a sharp rumbling sound (thunder)

Dust/Sand Storm

An ensemble of particles of dust or sand energetically lifted to great heights by a strong and turbulent wind.

Frost

Ice deposits on ground

Air temperature $\leq 4^{\circ}\text{C}$ (over Plains)

Squall

A strong wind that rises suddenly, lasts for atleast 1 minute.

Moderate: Wind speed 52-61 kmph

Severe: Wind speed 62-67 kmph

Very Severe: Wind speed > 67 kmph

Sea State

Effect of various waves in the sea over specific area

Rough to very rough: Wind speed 41-62 kmph (22-33 knots) & Wave height 2.5-6 metre

High to very high: Wind speed 63-117 kmph (34-63 knots) & Wave height 6-14 metre

Phenomenal: Wind speed > 117 kmph (> 63 knots) & Wave height > 14 metre

Cyclone

Cyclonic Storm: Wind speed 62-87 kmph (34-47 knots)

Severe Cyclonic Storm: Wind speed 88-117 kmph (48-63 knots)

Very Severe Cyclonic Storm: Wind speed 118-165 kmph (64 - 89 knots)

Extremely Severe Cyclonic Storm: Wind speed 166-220 kmph (90 -119 knots)

Super Cyclone Storm: Wind speed > 220 kmph (> 119 knots)

* Red colour warning does not mean "Red Alert", Red colour warning means "Take Action".

Forecast and Warning for any day is valid from 0830 hours IST of day till 0830 hours IST of next day.

For more details, kindly visit <https://mausam.imd.gov.in> or contact: 011-2434-4599

(Service to the Nation since 1875)